

# MOOD PINHOLE

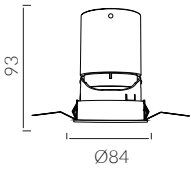
## Φ75 Adjustable Round



cutout :75mm



Adjustable Optic



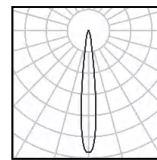
**IP Rating:** IP20 and IP44 options  
**Optics:** 12°/20°/29°/44°  
**UGR:** <10  
**CRI:** 98Ra  
**Lifetime:** >50,000 hrs (L70 B10)  
**CCT:** 2700K/3000K/3500K/4000K/5000K/  
 2000K-3000K/1800K-4000K/2700K-6000K

**Typical Source**  
**Efficacy (lm/W):** 110  
**Control:** On/off, Mains Dim, 0/1-10V, Dali, Zigbee, Casambi  
**Binning:** 2 Step MacAdams  
**Input:** AC220-240V 50/60Hz  
**Output:** DC 36V 200mA 8W  
 DC 36V 250mA 10W  
 DC 36V 300mA 12W  
 DC 36V 350mA 15W

**Ambient temp:** -20 °C to 45 °C

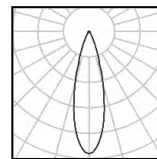
**Class:** II

**Optional accessories:** Honeycomb louvre, Solite Lense, Spread Lense,  
 Colour Filter



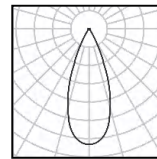
15W Ra98 3000K 10°

h(m)	E(lx)	D(m)
0.5	14433	0.10
1.0	3608	0.21
1.5	1604	0.31
2.0	902	0.41
2.5	577	0.52
3.0	401	0.62



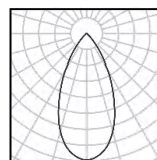
15W Ra98 3000K 20°

h(m)	E(lx)	D(m)
0.5	7982	0.18
1.0	1995	0.35
1.5	887	0.53
2.0	499	0.71
2.5	319	0.88
3.0	222	1.06



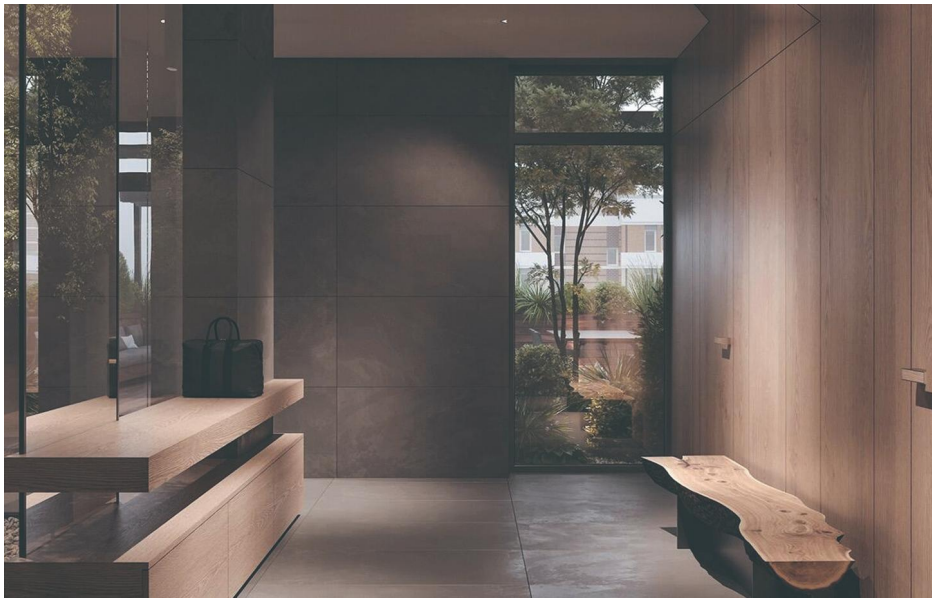
15W Ra98 3000K 29°

h(m)	E(lx)	D(m)
0.5	5441	0.25
1.0	1360	0.51
1.5	605	0.76
2.0	340	1.02
2.5	218	1.27
3.0	151	1.53



15W Ra98 3000K 44°

h(m)	E(lx)	D(m)
0.5	2008	0.38
1.0	502	0.76
1.5	223	1.15
2.0	126	1.53
2.5	80	1.91
3.0	56	2.29



DuraGreen project:  
Private Residence



<b>W system</b>	<b>lm system</b>	<b>optics</b>	<b>code</b>
8W	364	12°	AF7508W-O-30N12-W
8W	400	20°	AF7508W-O-30N20-W
8W	506	29°	AF7508W-O-30N29-W
8W	460	44°	AF7508W-O-30N44-W



<b>W system</b>	<b>lm system</b>	<b>optics</b>	<b>code</b>
10W	428	12°	AF7510W-O-30N12-W
10W	481	20°	AF7510W-O-30N20-W
10W	597	29°	AF7510W-O-30N29-W
10W	540	44°	AF7510W-O-30N44-W



<b>W system</b>	<b>lm system</b>	<b>optics</b>	<b>code</b>
12W	504	12°	AF7512W-O-30N12-W
12W	565	20°	AF7512W-O-30N20-W
12W	704	29°	AF7512W-O-30N29-W
12W	632	44°	AF7512W-O-30N44-W



<b>W system</b>	<b>lm system</b>	<b>optics</b>	<b>code</b>
15W	585	12°	AF7515W-O-30N12-W
15W	642	20°	AF7515W-O-30N20-W
15W	805	29°	AF7515W-O-30N29-W
15W	718	44°	AF7515W-O-30N44-W



MOOD light fittings, stylishly designed with trendy colors and high-quality materials, radiate sophistication and elegance. They offer endless possibilities and exceptional versatility, easily adapting to any space.





Black Matt



White Matt



Silver Matt



Black Specular



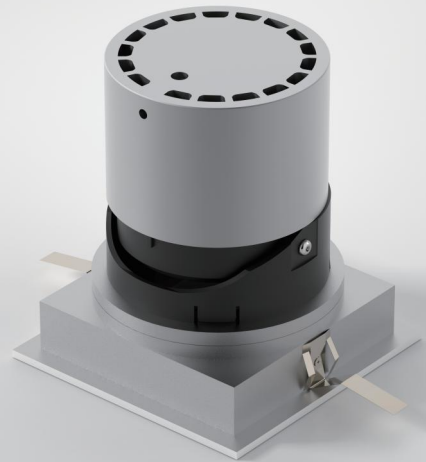
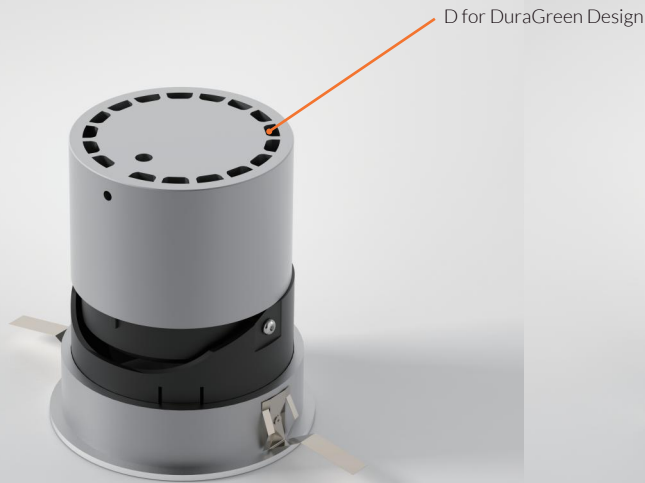
Silver Specular



Gold Specular



Grey Specular



## Specification Code

Type	Cut out	Power	Colour Temp	Driver	Beam Width	Bezel Colour	Baffle Colour	Options
<b>MF</b>	<b>75</b>	<b>08W</b>	<b>30</b>	<b>N</b>	<b>24</b>	<b>W</b>	<b>B</b>	<b>C</b>
MF/Fixed	22/22mm		27/2700K	M/Mains Dim	05/5°	W/White	B/Black Specular	C/Clear Lens
AF/Adjustable	33/33mm		30/3000K	D/DALI	10/10°	B/Black	S/Silver Specular	F/Frosted Lens
MFL/Lens type, Fixed	35/35mm 40/40mm		40/4000K WD/Warm Dim	0/0-10V N/Non Dim	13/13° 15/15°	L/Polished Chrome G/Polished Brass	W/White Matt BM/Black Matt	H/Honeycomb S/Spread Lense
AFL/Lens type, Adjustable	45/45mm 55/55mm		1840/1800K-4000K 2765/2700K-6500K	X/No Driver	20/20° 24/24°	J/Antique Bronze S/Satin Nickle		
MFW/Wall Wash	58/58mm				30/30°			
MFZ/Zoomable	75/75mm				36/36°			
MFP/Pinhole	80/80mm				50/50°			
MFQ/Fixed Square	100/100mm							