

# ACME STRAIGHT

## Φ78 Engine

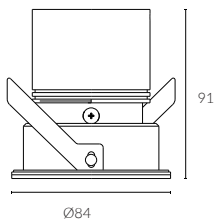
### Fixed Round Downlight



cutout: 78mm



Fixed Optic



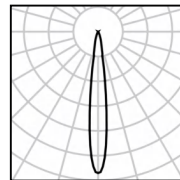
bezel | baffle



Black Painted  
9005

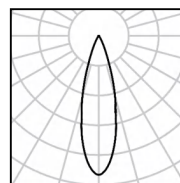


White Painted  
9016



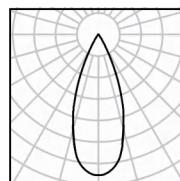
12W Ra98 3000K 15°

h(m)	E lx	D(m)
0.5	18360	0.13
1.0	4590	0.26
1.5	2040	0.39
2.0	1148	0.52
2.5	734	0.65
3.0	510	0.78



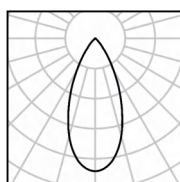
12W Ra98 3000K 24°

h(m)	E lx	D(m)
0.5	6420	0.22
1.0	1605	0.44
1.5	713	0.65
2.0	401	0.87
2.5	257	1.09
3.0	178	1.31



12W Ra98 3000K 36°

h(m)	E lx	D(m)
0.5	2791	0.31
1.0	698	0.62
1.5	310	0.93
2.0	174	1.25
2.5	112	1.56
3.0	78	1.87



12W Ra98 3000K 50°

h(m)	E lx	D(m)
0.5	1324	0.52
1.0	331	1.03
1.5	147	1.55
2.0	83	2.06
2.5	53	2.58
3.0	37	3.10

<b>IP Rating:</b>	IP20 and IP44 options
<b>Optics:</b>	15°/24°/36°/50°
<b>UGR:</b>	< 10
<b>CRI:</b>	98Ra
<b>Lifetime:</b>	>50,000 hrs (L70 B10)
<b>CCT:</b>	2700K/3000K/3500K/4000K/5000K/ 2000K-3000K/1800K-4000K/2700K-6000K

<b>Typical Source Efficacy (lm/W):</b>	110
<b>Control:</b>	On/off, Mains Dim, 0/1-10V, Dali, Zigbee, Casambi
<b>Binning:</b>	2 Step MacAdams
<b>Input:</b>	AC220-240V 50/60Hz
<b>Output:</b>	DC 36V 200mA 8W DC 36V 250mA 10W DC 36V 300mA 12W

<b>Ambient temp:</b>	-20 °C to 45 °C
<b>Class:</b>	II
<b>Optional accessories:</b>	Honeycomb louvre, Solite Lense, Spread Lense, Colour Filter

<b>Ceiling Thickness:</b>	9mm-28mm
<b>Material:</b>	Fine aluminium 6063A
<b>Fire resistance test:</b>	60 minutes



DuraGreen project:  
CIVRO Showroom



<b>W system</b>	<b>lm system</b>	<b>optics</b>	<b>code</b>
8W	450	15°	MFL7808W-30N15-B
8W	442	24°	MFL7808W-30N24-B
8W	397	36°	MFL7808W-30N36-B
8W	327	50°	MFL7808W-30N50-B



<b>W system</b>	<b>lm system</b>	<b>optics</b>	<b>code</b>
10W	580	15°	MFL7810W-30N15-B
10W	563	24°	MFL7810W-30N24-B
10W	519	36°	MFL7810W-30N36-B
10W	500	50°	MFL7810W-30N50-B



<b>W system</b>	<b>lm system</b>	<b>optics</b>	<b>code</b>
12W	689	15°	MFL7812W-30N15-B
12W	671	24°	MFL7812W-30N24-B
12W	618	36°	MFL7812W-30N36-B
12W	598	50°	MFL7812W-30N50-B

ACME



Black Nickel

---



Solid Brass



Antique Bronze

---



Black Painted 9005



White Painted 9016

---



Brushed Grey



Polished Chrome

Our light fixtures are made of the highest quality metal materials, like pure aluminium and solid brass. Our process is precise and sustainable to achieve circular products that last longer and look stylish.

The ACME light engines come in three distinct shapes: straight baffle for maximum brightness, curve baffle for a softer light effect, and semi-recessed baffle for added ceiling decoration. They are available in five different sizes with both trimmed and trimless bezels (cutouts of 50mm, 57mm, 68mm, and 78mm) and offered in seven standard finishes including white 9016, black 9005, polished chrome, black nickel, antique bronze, and solid brass.



ACME STRAIGHT



ACME CURVE



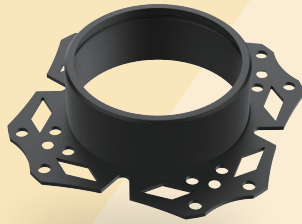
ACME SEMI

We transform premium materials into fine luxury goods that elevate any space.

ACME



Light engine



Installation frame trimless



Installation frame trim

Circular economy principles are intricately woven into every stage of our design and manufacturing process, making ACME downlights a shining example of sustainability. These fixtures are fully modular, allowing for easy repair, reuse, and end-of-life reintroduction into standard stock.

Safety wire



Accessories

Spread



Double Asymmetric



Honeycomb



Red filter



Blue filter



Amber filter



