

ACME CURVE

Φ68 Engine Curve

Trimless Adjustable Round Downlight



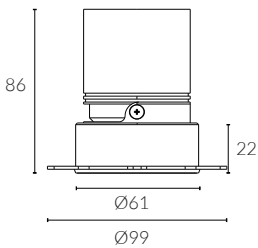
cutout :68mm



Adjustable Optic



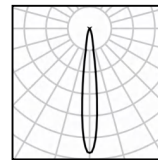
Curve baffle for soft and subtle beams



baffle

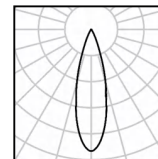


- IP Rating:** IP20 and IP44 options
- Optics:** 15°/24°/36°/50°
- UGR:** <10
- CRI:** 98Ra
- Lifetime:** >50,000 hrs (L70 B10)
- CCT:** 2700K/3000K/3500K/4000K/5000K/
2000K-3000K/1800K-4000K/2700K-6000K
- Typical Source Efficacy (lm/W):** 110
- Control:** On/off, Mains Dim, 0/1-10V, Dali, Zigbee, Casambi
- Binning:** 2 Step MacAdams
- Input:** AC220-240V 50/60Hz
- Output:** DC 36V 200mA 8W
DC 36V 250mA 10W
DC 36V 300mA 12W
- Ambient temp:** -20 °C to 45 °C
- Class:** II
- Optional accessories:** Honeycomb louvre, Solite Lens, Spread Lens, Colour Filter
- Material:** Fine aluminium 6063A
- Fire resistance test:** 60 minutes



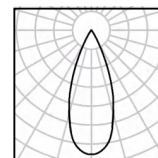
12W Ra98 3000K 15°

h(m)	E(lx)	D(m)
0.5	10897	0.17
1.0	2724	0.33
1.5	1211	0.50
2.0	681	0.66
2.5	436	0.83
3.0	303	0.99



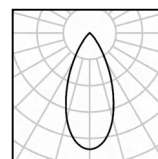
12W Ra98 3000K 24°

h(m)	E(lx)	D(m)
0.5	8621	0.20
1.0	2155	0.41
1.5	958	0.61
2.0	539	0.81
2.5	345	1.02
3.0	239	1.22



12W Ra98 3000K 36°

h(m)	E(lx)	D(m)
0.5	4792	0.28
1.0	1198	0.55
1.5	532	0.83
2.0	300	1.10
2.5	192	1.38
3.0	133	1.65



12W Ra98 3000K 50°

h(m)	E(lx)	D(m)
0.5	1608	0.47
1.0	402	0.93
1.5	179	1.40
2.0	100	1.87
2.5	64	2.33
3.0	45	2.80



W system	lm system	optics	code
8W	508	15°	AFL6808W-C-TL-30N15-B
8W	486	24°	AFL6808W-C-TL-30N24-B
8W	474	36°	AFL6808W-C-TL-30N36-B
8W	406	50°	AFL6808W-C-TL-30N50-B



W system	lm system	optics	code
10W	559	15°	AFL6810W-C-TL-30N15-B
10W	548	24°	AFL6810W-C-TL-30N24-B
10W	529	36°	AFL6810W-C-TL-30N36-B
10W	434	50°	AFL6810W-C-TL-30N50-B



W system	lm system	optics	code
12W	648	15°	AFL6812W-C-TL-30N15-B
12W	636	24°	AFL6812W-C-TL-30N24-B
12W	624	36°	AFL6812W-C-TL-30N36-B
12W	583	50°	AFL6812W-C-TL-30N50-B

ACME



Black Nickel



Solid Brass



Antique Bronze



Black Painted 9005



White Painted 9016



Brushed Grey



Polished Chrome

Our light fixtures are made of the highest quality metal materials, like pure aluminium and solid brass. Our process is precise and sustainable to achieve circular products that last longer and look stylish.

The ACME light engines come in three distinct shapes: straight baffle for maximum brightness, curve baffle for a softer light effect, and semi-recessed baffle for added ceiling decoration. They are available in five different sizes with both trimmed and trimless bezels (cutouts of 50mm, 57mm, 68mm, and 78mm) and offered in seven standard finishes including white 9016, black 9005, polished chrome, black nickel, antique bronze, and solid brass.



ACME STRAIGHT



ACME CURVE

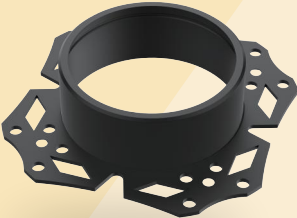


ACME SEMI

We transform premium materials into fine luxury goods that elevate any space.



Light engine



Installation frame trimless



Installation frame trim

Circular economy principles are intricately woven into every stage of our design and manufacturing process, making ACME downlights a shining example of sustainability. These fixtures are fully modular, allowing for easy repair, reuse, and end-of-life reintroduction into standard stock.

Safety wire



Accessories

Spread



Double Asymmetric



Honeycomb



Red filter



Blue filter



Amber filter



