

ACME SQUARE

Φ68 Engine

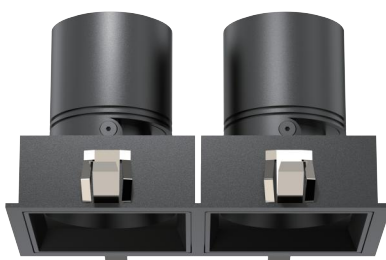
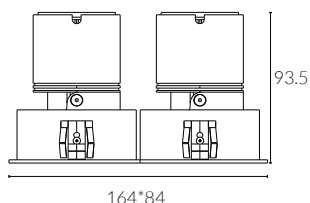
Adjustable Twin Square Downlight



cutout: 156*80mm



Adjustable Optic



bezel | baffle



White Painted 9016



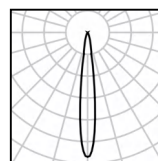
Black Painted 9005

IP Rating:	IP20 and IP44 options
Optics:	15°/24°/36°/50°
UGR:	< 10
CRI:	98Ra
Lifetime:	> 50,000 hrs (L70 B10)
CCT:	2700K/3000K/3500K/4000K/5000K/ 2000K-3000K/1800K-4000K/2700K-6000K

Typical Source	
Efficacy (lm/W):	110
Control:	On/off, Mains Dim, 0/1-10V, Dali, Zigbee, Casambi
Binning	2 Step MacAdams
Input:	AC220-240V 50/60Hz
Output:	DC 36V 200mA 8W x 2 DC 36V 250mA 10W x 2 DC 36V 300mA 12W x 2

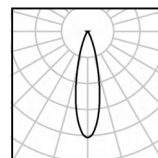
Ambient temp:	-20 °C to 45 °C
Class:	II
Optional accessories:	Honeycomb louvre, Solite Lens, Spread Lens, Colour Filter

Ceiling Thickness:	9mm-28mm
Material:	Fine aluminium 6063A



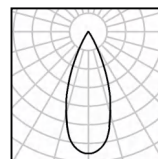
12W Ra98 3000K 15°

h(m)	E lx	D(m)
0.5	10897	0.17
1.0	2724	0.33
1.5	1211	0.50
2.0	681	0.66
2.5	436	0.83
3.0	303	0.99



12W Ra98 3000K 24°

h(m)	E lx	D(m)
0.5	5992	0.22
1.0	1498	0.45
1.5	666	0.67
2.0	375	0.89
2.5	240	1.12
3.0	166	1.34

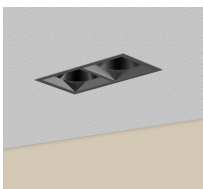


12W Ra98 3000K 36°

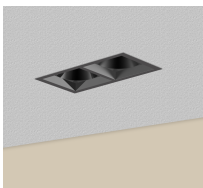
h(m)	E lx	D(m)
0.5	3401	0.31
1.0	850	0.62
1.5	378	0.93
2.0	213	1.25
2.5	136	1.56
3.0	94	1.87



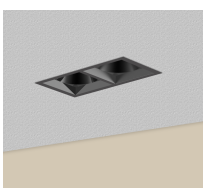
DuraGreen project:
London Luxury Home



W system	lm system	optics	code
8W x 2	487 x 2	15°	AFL6808WX2-Q-30N15-B
8W x 2	503 x 2	24°	AFL6808WX2-Q-30N24-B
8W x 2	492 x 2	36°	AFL6808WX2-Q-30N36-B
8W x 2	427 x 2	50°	AFL6808WX2-Q-30N50-B



W system	lm system	optics	code
10W x 2	553 x 2	15°	AFL6810WX2-Q-30N15-B
10W x 2	575 x 2	24°	AFL6810WX2-Q-30N24-B
10W x 2	565 x 2	36°	AFL6810WX2-Q-30N36-B
10W x 2	485 x 2	50°	AFL6810WX2-Q-30N50-B



W system	lm system	optics	code
12W x 2	635 x 2	15°	AFL6812WX2-Q-30N15-B
12W x 2	773 x 2	24°	AFL6812WX2-Q-30N24-B
12W x 2	763 x 2	36°	AFL6812WX2-Q-30N36-B
12W x 2	655 x 2	50°	AFL6812WX2-Q-30N50-B

ACME



Black Nickel



Solid Brass



Antique Bronze



Black Painted 9005



White Painted 9016



Brushed Grey



Polished Chrome

Our light fixtures are made of the highest quality metal materials, like pure aluminium and solid brass. Our process is precise and sustainable to achieve circular products that last longer and look stylish.

The ACME light engines come in three distinct shapes: straight baffle for maximum brightness, curve baffle for a softer light effect, and semi-recessed baffle for added ceiling decoration. They are available in five different sizes with both trimmed and trimless bezels (cutouts of 50mm, 57mm, 68mm, and 78mm) and offered in seven standard finishes including white 9016, black 9005, polished chrome, black nickel, antique bronze, and solid brass.



ACME STRAIGHT



ACME CURVE



ACME SEMI

We transform premium materials into fine luxury goods that elevate any space.



Light engine



Installation frame trimless



Installation frame trim

Circular economy principles are intricately woven into every stage of our design and manufacturing process, making ACME downlights a shining example of sustainability. These fixtures are fully modular, allowing for easy repair, reuse, and end-of-life reintroduction into standard stock.

Safety wire



Accessories

Spread



Double Asymmetric



Honeycomb



Red filter



Blue filter



Amber filter



