

78 Long Snoot

78 Short Snoot

78 Semi

ACME SPY

Φ78 Long Snout Downlight



cutout:78mm



Adjustable Optic

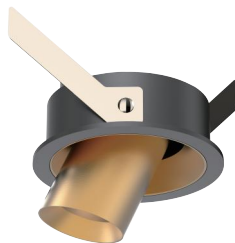


Structure

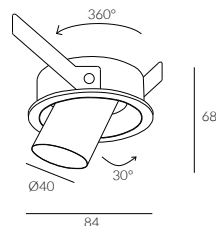


IP Rating: IP20 and IP44 options
Optics: 15°/24°/36°/50°
UGR: < 10
CRI: 98Ra
Lifetime: >50,000 hrs (L70 B10)
CCT: 2700K/3000K/3500K/4000K/5000K/
 2000K-3000K/1800K-4000K/2700K-6000K

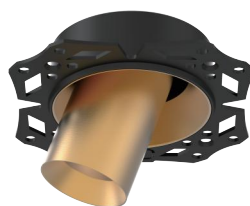
Typical Source
Efficacy (lm/W): 110
Control: On/off, Mains Dim, 0/1-10V, Dali, Zigbee, Casambi
Binning 2 Step MacAdams
Input: AC220-240V 50/60Hz
Output: DC 36V 250mA 10W
Ambient temp: -20 °C to 45 °C
Class: II
Material: Fine aluminium 6063A



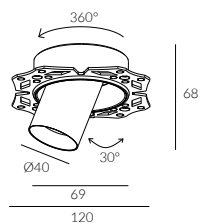
Recessed Trim



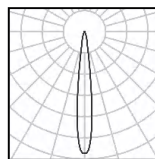
68



Recessed Trimless

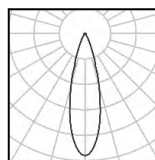


68



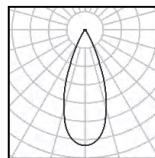
10W Ra98 3000K 15°

h(m)	E(lx)	D(m)
0.5	8822	0.15
1.0	2206	0.30
1.5	980	0.45
2.0	551	0.60
2.5	353	0.76
3.0	245	0.91



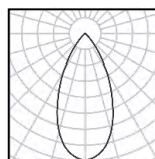
10W Ra98 3000K 24°

h(m)	E(lx)	D(m)
0.5	6615	0.23
1.0	1654	0.46
1.5	735	0.69
2.0	413	0.92
2.5	265	1.15
3.0	184	1.37



10W Ra98 3000K 36°

h(m)	E(lx)	D(m)
0.5	3458	0.32
1.0	864	0.65
1.5	384	0.97
2.0	216	1.29
2.5	138	1.61
3.0	96	1.94



10W Ra98 3000K 50°

h(m)	E(lx)	D(m)
0.5	2048	0.45
1.0	512	0.89
1.5	228	1.34
2.0	128	1.79
2.5	82	2.24
3.0	57	2.68



Recessed Trim

W system	lm system	optics	code
10W	501	15°	AFL7810W-LS-30N15-B
10W	653	24°	AFL7810W-LS-30N24-B
10W	692	36°	AFL7810W-LS-30N36-B
10W	676	50°	AFL7810W-LS-30N50-B



Recessed Trimless

W system	lm system	optics	code
10W	501	15°	AFL7810W-LS-30N15-B
10W	653	24°	AFL7810W-LS-30N24-B
10W	692	36°	AFL7810W-LS-30N36-B
10W	676	50°	AFL7810W-LS-30N50-B