

78 Long Snoot

78 Short Snoot

78 Semi

ACME SPY



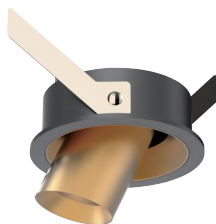
Φ78 Long Snoot Downlight



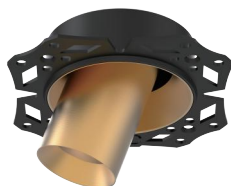
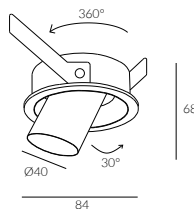
cutout:78mm



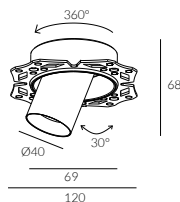
Adjustable Optic



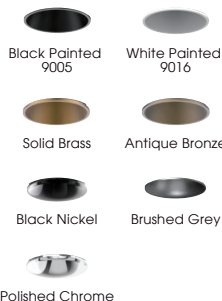
Recessed Trim



Recessed Trimless



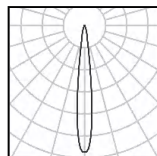
Structure



- IP Rating:** IP20 and IP44 options
- Optics:** 10°/15°/24°/36°/42°
- UGR:** <10
- CRI:** 98Ra
- Lifetime:** >50,000 hrs (L70 B10)
- CCT:** 2700K/3000K/3500K/4000K/5000K/
2000K-3000K/1800K-4000K/2700K-6000K

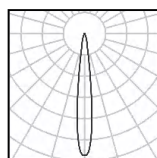
Typical Source

- Efficacy (lm/W):** 110
- Control:** On/off, Mains Dim, 0/1-10V, Dali, Zigbee, Casambi
- Binning:** 2 Step MacAdams
- Input:** AC220-240V 50/60Hz
- Output:** DC 36V 250mA 10W
- Ambient temp:** -20 C to 45 C
- Class:** II
- Material:** Fine aluminium 6063A



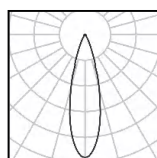
10W Ra98 3000K 10°

h(m)	E(lx)	D(m)
0.5	14091	0.08
1.0	3523	0.17
1.5	1566	0.25
2.0	881	0.34
2.5	564	0.42
3.0	391	0.50



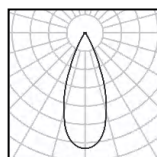
10W Ra98 3000K 15°

h(m)	E(lx)	D(m)
0.5	8307	0.14
1.0	2077	0.28
1.5	923	0.42
2.0	519	0.56
2.5	332	0.70
3.0	231	0.84



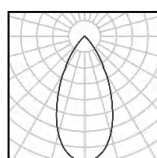
10W Ra98 3000K 24°

h(m)	E(lx)	D(m)
0.5	4933	0.19
1.0	1233	0.39
1.5	548	0.58
2.0	308	0.78
2.5	197	0.97
3.0	137	1.17



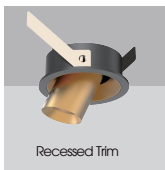
10W Ra98 3000K 36°

h(m)	E(lx)	D(m)
0.5	2734	0.31
1.0	684	0.63
1.5	304	0.94
2.0	171	1.25
2.5	109	1.57
3.0	76	1.88



10W Ra98 3000K 42°

h(m)	E(lx)	D(m)
0.5	1561	0.38
1.0	390	0.77
1.5	173	1.15
2.0	98	1.54
2.5	62	1.92
3.0	43	2.30



Recessed Trim

W system	lm system	optics	code
10W	490	10°	AFL7810W-LS-30N10-B
10W	553	15°	AFL7810W-LS-30N15-B
10W	540	24°	AFL7810W-LS-30N24-B
10W	664	36°	AFL7810W-LS-30N36-B
10W	556	42°	AFL7810W-LS-30N42-B



Recessed Trimless

W system	lm system	optics	code
10W	490	10°	AFL7810W-LS-TL-30N10-B
10W	553	15°	AFL7810W-LS-TL-30N15-B
10W	540	24°	AFL7810W-LS-TL-30N24-B
10W	664	36°	AFL7810W-LS-TL-30N36-B
10W	556	42°	AFL7810W-LS-TL-30N42-B