

MOOD DOWNLIGHT

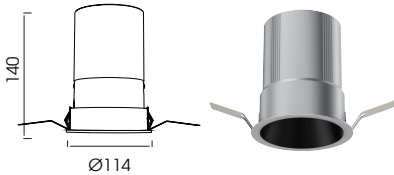
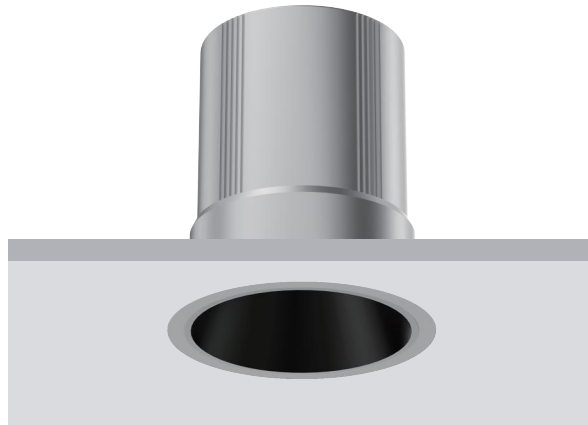
Φ100
Fixed Round



cutout: 100mm



Fixed Optic



baffle



Black Matt



White Matt



Silver Matt



Grey Specular



Black Specular



Silver Specular



Gold Specular



Bespoke

IP Rating: IP20 and IP44 options
Optics: 24°/36°/50°
UGR: <10
CRI: 98Ra
Lifetime: >50,000 hrs (L70 B10)
CCT: 2700K/3000K/3500K/4000K/5000K

Typical Source

Efficacy (lm/W): 110

Control: On/off, Mains Dim, 0/1-10V, Dali, Zigbee, Casambi

Binning: 2 Step MacAdams

Input: AC 220-240V 50/60Hz

Output: DC 36V 500mA 20W

DC 36V 600mA 25W

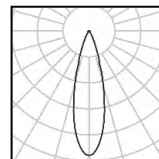
DC 36V 750mA 30W

DC 36V 1000mA 40W

Ambient temp: -20 °C to 45 °C

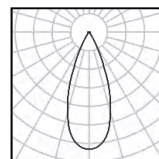
Class: II

Optional accessories: Honeycomb louvre, Solite Lense, Spread Lense, Colour Filter



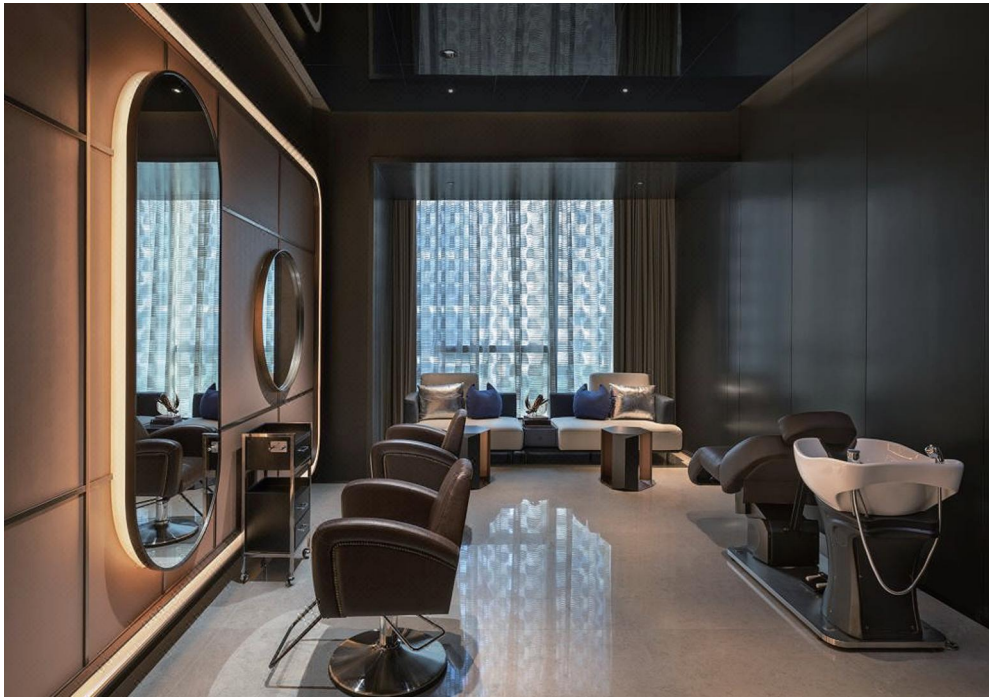
30W Ra98 3000K 24°

h(m)	E(lx)	D(m)
1.0	5888	0.39
2.0	1457	0.77
3.0	652	1.20
4.0	367	1.50
5.0	235	1.90
6.0	163	2.30

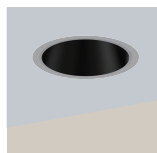


30W Ra98 3000K 36°

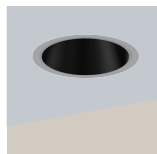
h(m)	E(lx)	D(m)
1.0	2991	0.54
2.0	748	1.10
3.0	332	1.60
4.0	187	2.20
5.0	120	2.70
6.0	83	3.20



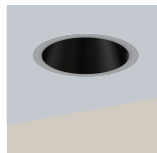
DuraGreen project:
Westin Hotel



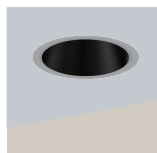
W system	lm system	optics	code
20W	1407	24°	MF10020W-30N24-W
20W	1420	36°	MF10020W-30N36-W
20W	1411	50°	MF10020W-30N50-W



W system	lm system	optics	code
25W	1777	24°	MF10025W-30N24-W
25W	1797	36°	MF10025W-30N36-W
25W	1764	50°	MF10025W-30N50-W



W system	lm system	optics	code
30W	2028	24°	MF10030W-30N24-W
30W	2071	36°	MF10030W-30N36-W
30W	2067	50°	MF10030W-30N50-W



W system	lm system	optics	code
40W	2395	24°	MF10040W-30N24-W
40W	2465	36°	MF10040W-30N36-W
40W	2419	50°	MF10040W-30N50-W