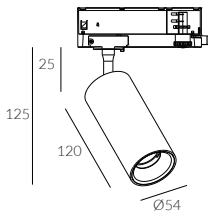


ACME 57

Φ57 Adjustable 220-240V~ Track Light



Adjustable Optic



-B Black Painted 9005

-PN Pearl Nickel

-W White Painted 9016

-HB Heritage Brass



IP Rating:

Front IP44, optional IP65

Optics:

15°/24°/36°/50°

UGR:

<10

CRI:

98Ra

Lifetime:

>50,000 hrs (L70 B10)

CCT:

2700K/3000K/3500K/4000K
1800-3000K(Warm Dim), 2700K - 6000K (Tunable White)

Typical Source

Efficacy (lm/W):

110

Control:

On/off, Mains Dim, 0/1-10V, Dali, Casambi

Binning

2 Step MacAdams

Input:

AC220-240V 50/60Hz

Output:

DC 36V 150mA 6W
DC 36V 200mA 8W
DC 36V 250mA 10W

Ambient temp:

-20 °C to 45 °C

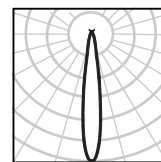
Class:

II

Optional accessories: Honeycomb louvre, Solite Lens, Spread Lens, Colour Filter

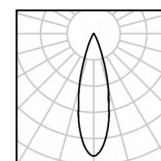
Material:

Fine aluminium 6063A



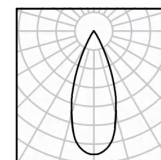
10W Ra98 3000K 15°

h(m)	E(lx)	D(m)
0.5	13172	0.14
1.0	3293	0.28
1.5	1464	0.42
2.0	823	0.56
2.5	527	0.70
3.0	366	0.84



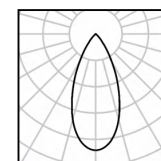
10W Ra98 3000K 24°

h(m)	E(lx)	D(m)
0.5	7091	0.21
1.0	1773	0.43
1.5	788	0.64
2.0	443	0.86
2.5	284	1.07
3.0	197	1.29



10W Ra98 3000K 36°

h(m)	E(lx)	D(m)
0.5	3820	0.31
1.0	955	0.63
1.5	424	0.94
2.0	239	1.25
2.5	153	1.57
3.0	106	1.88



10W Ra98 3000K 50°

h(m)	E(lx)	D(m)
0.5	1678	0.50
1.0	420	1.01
1.5	186	1.51
2.0	105	2.01
2.5	67	2.51
3.0	47	3.02



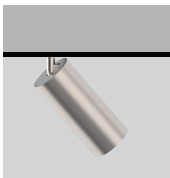
Pearl Nickel

A silky-smooth pearl sheen with subtle warm gold undertones and refined reflectivity, ideal for contemporary, minimalist, coastal, and transitional luxury homes where it brings clarity and elegant softness to marble, glass, and muted neutrals without feeling cold.

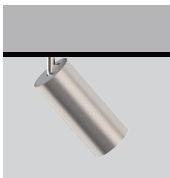


Heritage Brass

A multi-layered, hand-refined deep umber finish with delicate golden undertones and a nuanced patina that embodies Quiet Luxury. Ideal for British classic, organic modern, and bespoke residential interiors, adding a grounded, timeless elegance to marble, dark timber, and artisanal plaster palettes.



W system	lm system	optics	code
6W	450	15°	AFL5706W-TK-30N15
6W	532	24°	AFL5706W-TK-30N24
6W	523	36°	AFL5706W-TK-30N36
6W	464	50°	AFL5706W-TK-30N50



W system	lm system	optics	code
8W	582	15°	AFL5708W-TK-30N15
8W	624	24°	AFL5708W-TK-30N24
8W	661	36°	AFL5708W-TK-30N36
8W	600	50°	AFL5708W-TK-30N50



W system	lm system	optics	code
10W	704	15°	AFL5710W-TK-30N15
10W	751	24°	AFL5710W-TK-30N24
10W	814	36°	AFL5710W-TK-30N36
10W	723	50°	AFL5710W-TK-30N50