

# ACME PINHOLE

## Φ68 Engine

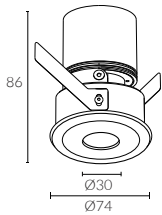
### Mini-Trim Adjustable Downlight



cutout :68mm



Adjustable Optic



bezel | baffle



Black Painted  
9005



White Painted  
9016

<b>IP Rating:</b>	Front IP44, optional IP65
<b>Optics:</b>	15°/24°/36°
<b>UGR:</b>	<10
<b>CRI:</b>	98Ra
<b>Lifetime:</b>	>50,000 hrs (L70 B10)
<b>CCT:</b>	2700K/3000K/3500K/4000K 1800-3000K(Warm Dim), 2700K - 6000K (Tunable White)

<b>Typical Source</b>	
<b>Efficacy (lm/W):</b>	110
<b>Control:</b>	On/off, Mains Dim, 0/1-10V, Dali, Zigbee, Casambi
<b>Binning</b>	2 Step MacAdams
<b>Input:</b>	AC220-240V 50/60Hz
<b>Output:</b>	DC 36V 200mA 8W DC 36V 250mA 10W DC 36V 300mA 12W

**Ambient temp:** -20 C to 45 C

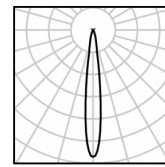
**Class:** II

**Optional accessories:** Honeycomb louvre, Solite Lense, Spread Lense, Colour Filter

**Material:** Fine aluminium 6063A

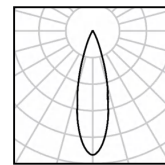
**Ceiling Thickness:** 9mm-28mm

**Certification:** CB/CE/UKCA/GLOBAL MARK/60-MINUNTE FIRE RESISTANCE



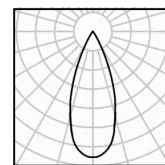
12W Ra98 3000K 15°

h(m)	E lx	D(m)
0.5	15070	0.11
1.0	3767	0.31
1.5	1674	0.34
2.0	942	0.46
2.5	603	0.57
3.0	419	0.68



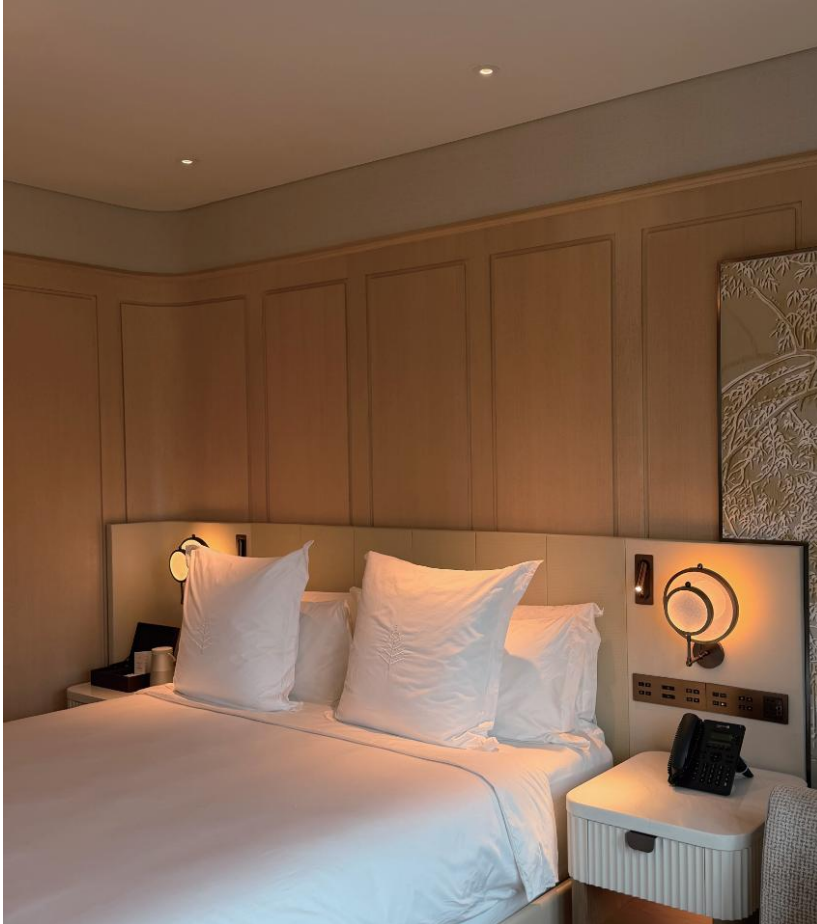
12W Ra98 3000K 24°

h(m)	E lx	D(m)
0.5	8322	0.19
1.0	2080	0.39
1.5	925	0.58
2.0	520	0.77
2.5	333	0.96
3.0	231	1.16



12W Ra98 3000K 36°

h(m)	E lx	D(m)
0.5	5073	0.25
1.0	1268	0.50
1.5	564	0.75
2.0	317	1.00
2.5	203	1.25
3.0	141	1.50



DuraGreen project:  
Four Seasons Hotel, Hanoi



W system	lm system	optics	code
8W	378	15°	AFL6808W-P-30N15
8W	498	24°	AFL6808W-P-30N24
8W	489	36°	AFL6808W-P-30N36



W system	lm system	optics	code
10W	460	15°	AFL6810W-P-30N15
10W	607	24°	AFL6810W-P-30N24
10W	593	36°	AFL6810W-P-30N36



W system	lm system	optics	code
12W	531	15°	AFL6812W-P-30N15
12W	704	24°	AFL6812W-P-30N24
12W	691	36°	AFL6812W-P-30N36