

# ACME STRAIGHT

## Φ68 Engine

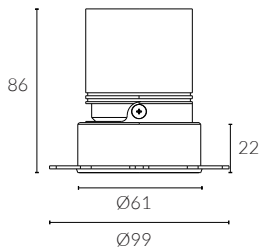
### Trimless Adjustable Round Downlight



cutout :68mm



Adjustable Optic



#### Standard

Black Painted  
9005

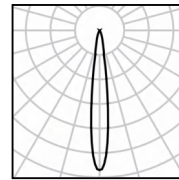
White Painted  
9016

<b>IP Rating:</b>	Front IP44, optional IP65
<b>Optics:</b>	15°/24°/36°/50°
<b>UGR:</b>	<10
<b>CRI:</b>	98Ra
<b>Lifetime:</b>	>50,000 hrs (L70 B10)
<b>CCT:</b>	2700K/3000K/3500K/4000K 1800-3000K(Warm Dim), 2700K - 6000K (Tunable White)

<b>Typical Source Efficacy (lm/W):</b>	110
<b>Control:</b>	On/off, Mains Dim, 0/1-10V, Dali, Zigbee, Casambi
<b>Binning</b>	2 Step MacAdams
<b>Input:</b>	AC220-240V 50/60Hz
<b>Output:</b>	DC 36V 200mA 8W DC 36V 250mA 10W DC 36V 300mA 12W
<b>Ambient temp:</b>	-20 °C to 45 °C

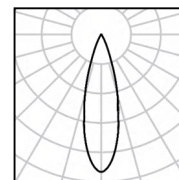
<b>Class:</b>	II
<b>Optional accessories:</b>	Honeycomb louvre, Solite Lense, Spread Lense, Colour Filter

<b>Material:</b>	Fine aluminium 6063A
<b>Certification:</b>	CB/CE/UKCA/GLOBAL MARK /60-MINUNTE FIRE RESISTANCE



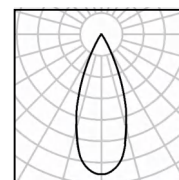
12W Ra98 3000K 15°

h(m)	E(lx)	D(m)
0.5	17841	0.14
1.0	4460	0.27
1.5	1982	0.41
2.0	1115	0.55
2.5	714	0.68
3.0	496	0.82



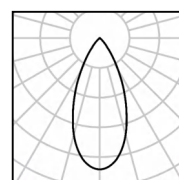
12W Ra98 3000K 24°

h(m)	E(lx)	D(m)
0.5	9544	0.22
1.0	2386	0.44
1.5	1060	0.65
2.0	596	0.87
2.5	382	1.09
3.0	265	1.31



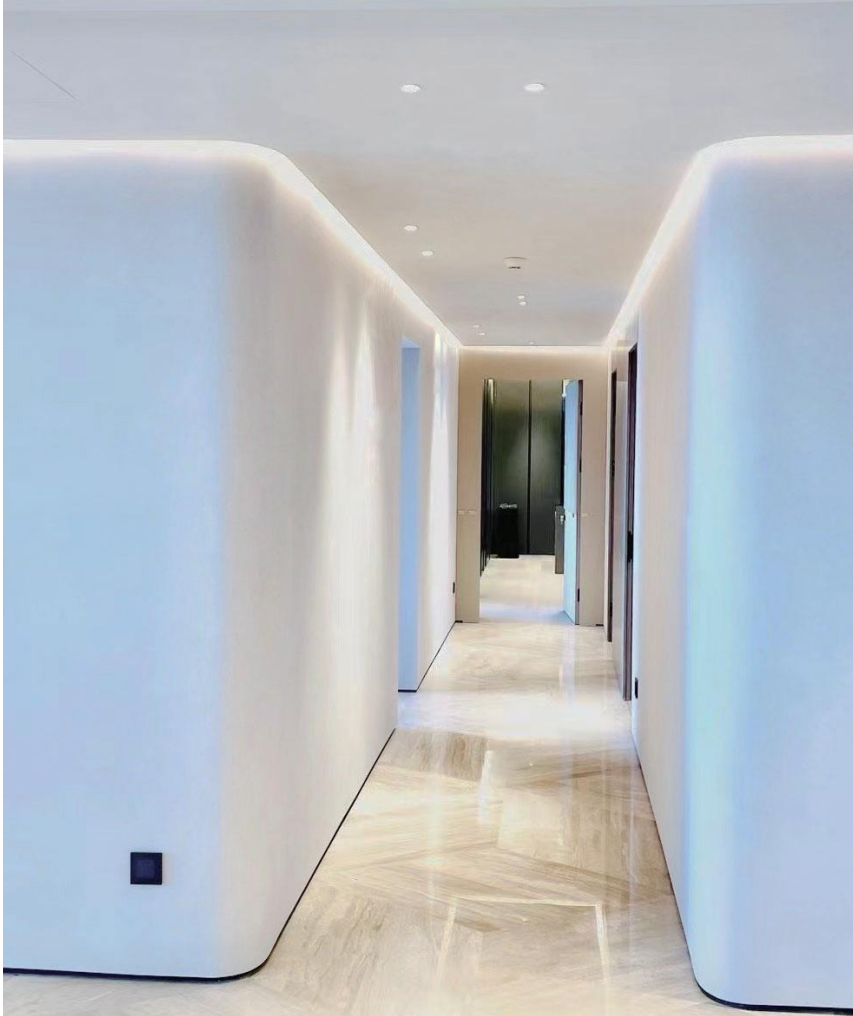
12W Ra98 3000K 36°

h(m)	E(lx)	D(m)
0.5	4724	0.31
1.0	1181	0.62
1.5	525	0.92
2.0	295	1.23
2.5	189	1.54
3.0	131	1.85

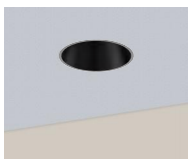


12W Ra98 3000K 50°

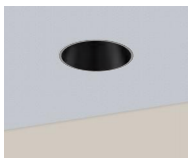
h(m)	E(lx)	D(m)
0.5	1171	0.47
1.0	428	0.95
1.5	190	1.42
2.0	107	1.90
2.5	68	2.37
3.0	48	2.85



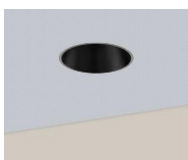
DuraGreen project:  
Tomson Riverside Residential



<b>W system</b>	<b>lm system</b>	<b>optics</b>	<b>code</b>
8W	648	15°	AFL6808W-TL-30N15
8W	701	24°	AFL6808W-TL-30N24
8W	655	36°	AFL6808W-TL-30N36
8W	558	50°	AFL6808W-TL-30N50



<b>W system</b>	<b>lm system</b>	<b>optics</b>	<b>code</b>
10W	787	15°	AFL6810W-TL-30N15
10W	856	24°	AFL6810W-TL-30N24
10W	817	36°	AFL6810W-TL-30N36
10W	731	50°	AFL6810W-TL-30N50



<b>W system</b>	<b>lm system</b>	<b>optics</b>	<b>code</b>
12W	897	15°	AFL6812W-TL-30N15
12W	1000	24°	AFL6812W-TL-30N24
12W	941	36°	AFL6812W-TL-30N36
12W	846	50°	AFL6812W-TL-30N50