

# ACME STRAIGHT

## Φ78 Engine

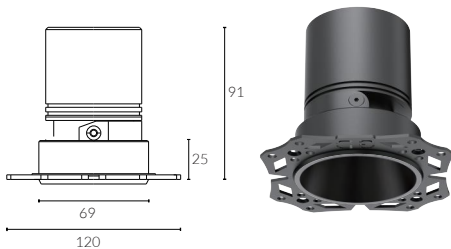
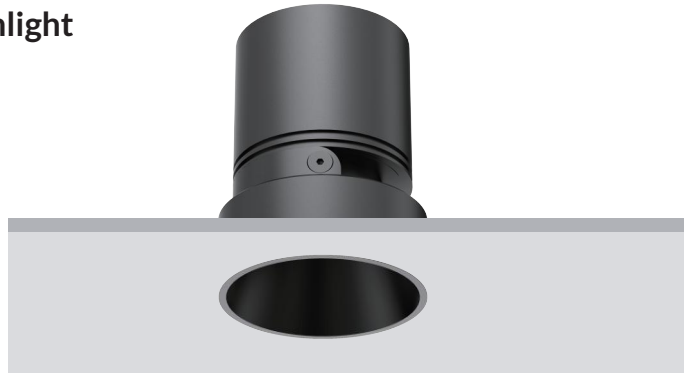
### Trimless Adjustable Round Downlight



cutout:78mm



Adjustable Optic



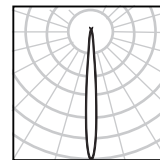
#### Standard



Black Painted  
9005

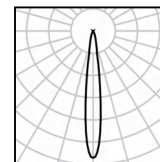


White Painted  
9016



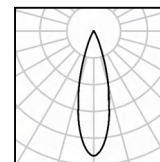
10W Ra98 3000K 5°

h(m)	E(lx)	D(m)
0.5	43452	0.05
1.0	10863	0.10
1.5	4828	0.15
2.0	2716	0.20
2.5	1738	0.24
3.0	1207	0.29



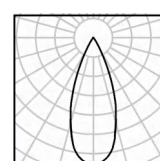
12W Ra98 3000K 15°

h(m)	E(lx)	D(m)
0.5	17662	0.13
1.0	4416	0.26
1.5	1962	0.39
2.0	1104	0.52
2.5	706	0.65
3.0	491	0.78



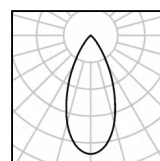
12W Ra98 3000K 24°

h(m)	E(lx)	D(m)
0.5	6966	0.22
1.0	1741	0.44
1.5	774	0.65
2.0	435	0.87
2.5	279	1.09
3.0	193	1.31



12W Ra98 3000K 36°

h(m)	E(lx)	D(m)
0.5	3324	0.32
1.0	831	0.64
1.5	369	0.96
2.0	208	1.28
2.5	133	1.61
3.0	92	1.93



12W Ra98 3000K 50°

h(m)	E(lx)	D(m)
0.5	1826	0.48
1.0	456	0.95
1.5	203	1.43
2.0	114	1.91
2.5	73	2.38
3.0	51	2.86

- IP Rating:** Front IP44, optional IP65
- Optics:** 15°/24°/36°/50°
- UGR:** <10
- CRI:** 98Ra
- Lifetime:** >50,000 hrs (L70 B10)
- CCT:** 2700K/3000K/3500K/4000K  
1800-3000K(Warm Dim), 2700K - 6000K (Tunable White)
- Typical Source Efficacy (lm/W):** 110
- Control:** On/off, Mains Dim, 0/1-10V, Dali, Zigbee, Casambi
- Binning:** 2 Step MacAdams
- Input:** AC220-240V 50/60Hz
- Output:** DC 36V 200mA 8W  
DC 36V 250mA 10W  
DC 36V 300mA 12W
- Ambient temp:** -20 °C to 45 °C
- Class:** II
- Optional accessories:** Honeycomb louvre, Solite Lense, Spread Lense, Colour Filter
- Material:** Fine aluminium 6063A
- Certification:** CB/CE/UKCA/GLOBAL MARK  
/60-MINUNTE FIRE RESISTANCE/  
IEC-62471-Photobiological-safety



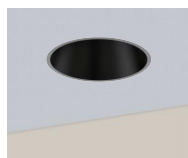
DuraGreen project:  
Covent Garden, Londoner Hotel



W system	lm system	optics	code
6W	186	5°	AFL7806W-TL-30N05



W system	lm system	optics	code
8W	255	5°	AFL7808W-TL-30N05
8W	573	15°	AFL7808W-TL-30N15
8W	548	24°	AFL7808W-TL-30N24
8W	519	36°	AFL7808W-TL-30N36
8W	600	50°	AFL7808W-TL-30N50



W system	lm system	optics	code
10W	276	5°	AFL7810W-TL-30N05
10W	699	15°	AFL7810W-TL-30N15
10W	666	24°	AFL7810W-TL-30N24
10W	624	36°	AFL7810W-TL-30N36
10W	726	50°	AFL7810W-TL-30N50



W system	lm system	optics	code
12W	822	15°	AFL7812W-TL-30N15
12W	790	24°	AFL7812W-TL-30N24
12W	780	36°	AFL7812W-TL-30N36
12W	841	50°	AFL7812W-TL-30N50